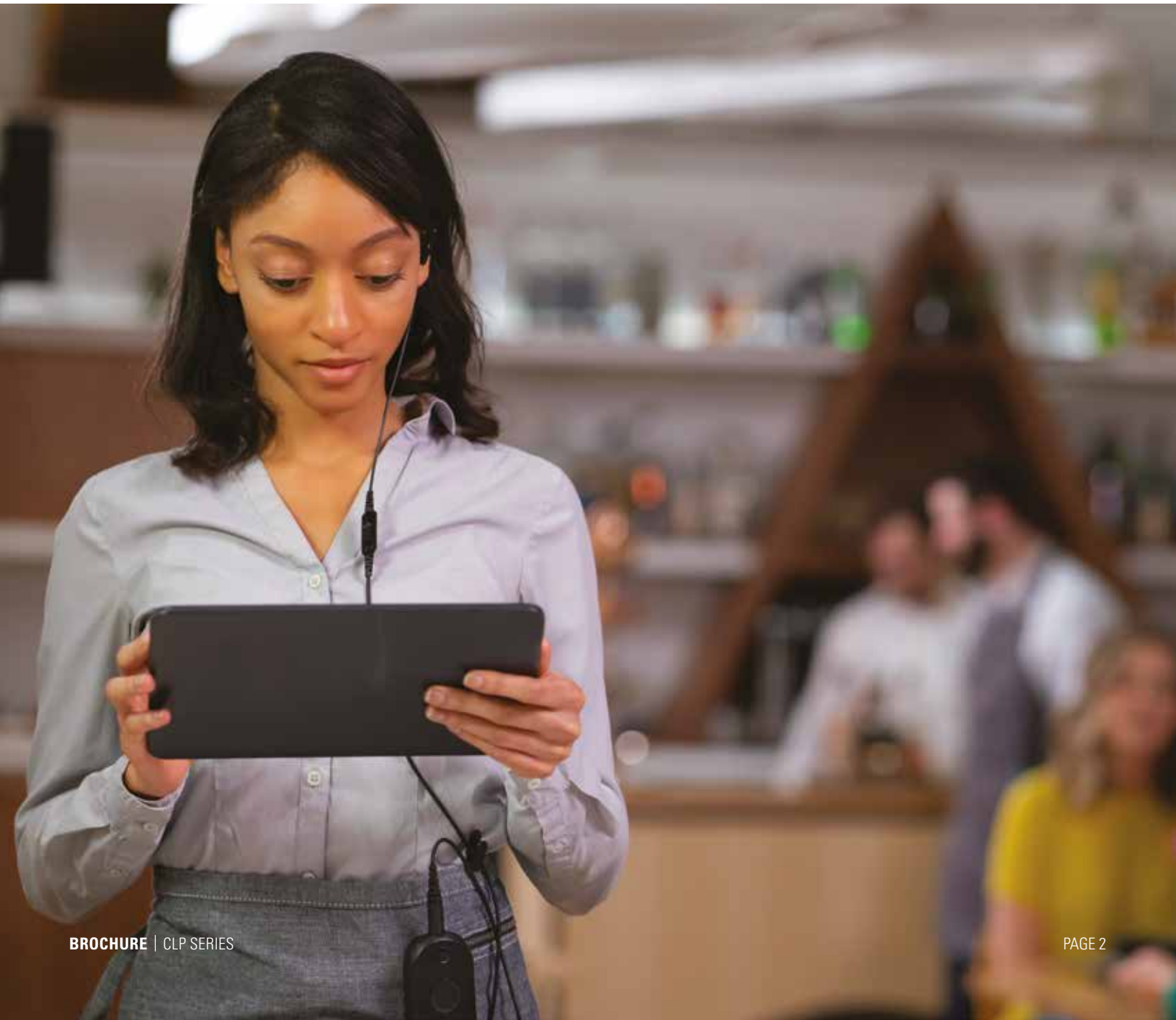




CLP SERIES TWO-WAY RADIO

FOCUSED. STYLISH. CONNECTED.

With rising pressure of online shopping and visitor reviews, customer experience is a top priority. Your team needs to connect instantly, respond quickly to address customer requests and provide premium service. From back-of-house to front-of-store, the CLP Series is your stylish and essential team communication tool - built to last all day, everyday in retail and hospitality.





SIMPLE AND SLEEK

The lightweight, palm-sized radio design helps you discreetly and comfortably carry the CLP with you through extended shifts. The sleek design is combined with essential controls to provide you with everything you need to stay connected.

OPERATE EFFORTLESSLY

Simple-to-use radio operation helps users focus less on the radio and more on the customer. The smart status glow ring lets users quickly check essential radio information at a glance. The large centrally located push-to-talk (PTT) button, and voice assisted operations to change menu options mean team members can operate the radio while staying focused on the customer.



